

Monitoring agricultural equipment field trials from the office

Application area: mechanical engineering > mobile > remote testing



In the area of in-field testing of agricultural equipment, imc has developed a stand-alone measurement solution with automatic remote monitoring. This significantly reduces the time required for development and product approval, provides higher quality data and reduces travel and personnel expenses.

The situation to date

Normally, test vehicles are often equipped with measurement solutions which consist of several sub-components, such as a data acquisition device, CAN bus logger, GPS tracking and, when needed, a video camera system. Synchronization problems, different operating concepts and foreign data formats made the operation and evaluation difficult.

The systems would only run in unison with a PC and the data had to be read on site. This only delayed the test evaluation and increased the amount of personnel required.

What vehicle developers desired

In addition to reliability and user-friendly operation, what test engineers and developers wanted can be quickly summarized:

- The test driver or technician should only see, or notice, the system when it is being installed or must be maintained or updated.
- The system should be autonomous and have the capability to start and stop the measurement automatically.
- The measured data are stored in a buffer memory on the device and an automatic, regular transfer of the data is performed. During unstable or inconsistent transmission, safe, continuous, real-time monitoring of the field testing should also be guaranteed.
- The solution should be completely unified in one system. That is, all relevant measurement variables should be synchronously acquired together.

Variations in voltage

The voltage supply from the onboard electronics poses challenges that should be handled by imc systems: the measurement system shouldn't drain the test vehicle's battery down; it must be able to support both 12 and 24 volt systems; and it must be able to handle strong voltage fluctuations and even outages, e.g., when starting the motor.

As a solution, the measurement system has the capability to enter a sleep-mode when it is not

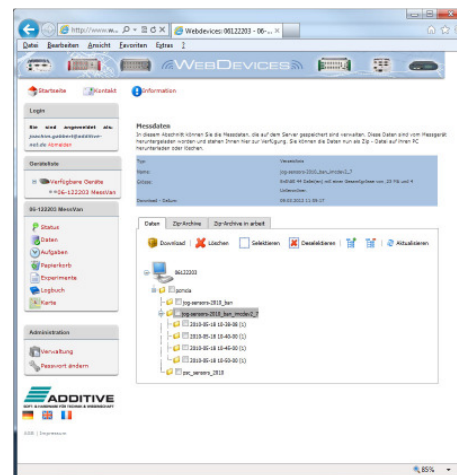
being used. It also has the ability to reboot in a matter of milliseconds.

The intelligent voltage supply of the device operates within the range of 10-36 V and can handle momentary voltage drops from startup. It monitors the voltage of the electrical system and, depending on the presence of an ignition, works completely autonomously and automatically, including a "hidden" installation.

When the vehicle is started, the device is woken up from sleep mode and immediately starts the measurement. Momentary voltage breaks are buffered. If the voltage remains permanently off, e.g., when turning off the vehicle, the measurement will terminate. All files are closed and the system will return back into the sleep mode.

Mobile and automatic

To conserve personnel resources, imc systems ensure that data are automatically delivered to the user. The data are transferred from the measuring system via Ethernet to a UMTS router, then using a virtual private mobile network, to the internet, finally arriving on the internet measurement platform imc WEBDEVICES.



Internet measurement platform imc WEBDEVICES

imc WEBDEVICES automatically loads the data from the measurement system, checks for completeness and then deletes the data from the device memory so that it does not overflow. The platform then makes the data available for all authorized personnel.

The solution is reliable and works across different countries and borders. This allows the data from all field trials in Europe to be centrally collected.

Condition-controlled data

The amount of vehicle data needed by users or developers – such as temperature, pressure, strain and acceleration, as well as CAN bus and GPS data – would normally exceed the available transfer bandwidth.

To reduce the necessary amount of data, the measurement data are stored and transmitted only condition-dependent. For this purpose, the system performs real-time analysis with imc Online FAMOS, which is carried out on the device's internal DSP. When the conditions are determined using imc Online FAMOS, the associated measurement data are temporarily stored and transmitted at the earliest opportunity to imc WEBDEVICES. The conditions to which the system responds can also be freely determined. Thus, the user will only receive the relevant data and can ideally respond to any potential problems in real time.

Conclusion

The combination of standard measurement technology with intelligent power supply, real-time analysis, condition-controlled data storage and wireless data transmission speeds up the field trial process of agricultural machinery during development and production. It saves costs, while at the same time, produces higher quality and more selectively collected data for a more efficient analysis during post-processing.

This solution is maintenance free, can be easily adapted to your application and offers more economical advantages when purchased in larger quantities.

Technical Realization

- Design and development by imc
- imc BUSDAQ data logger or imc C-SERIES with integrated DSP "imc Online FAMOS" for real-time analysis
- UMTS router with SIM card in a private mobile network with EU flat rate
- imc WEBDEVICES internet platform

Additional information:

imc Test & Measurement GmbH

Voltastr. 5
13355 Berlin, Germany

Telephone: +49 (0)30-46 7090-0
Fax: +49 (0)30-46 31 576
E-mail: hotline@imc-tm.de
Internet: <http://www.imc-tm.com>

imc Test & Measurement GmbH is a manufacturer and solution provider of productive test and measurement systems. imc implements metrological solutions for research, development, service and production. imc has particular expertise in the design and production of turnkey electric motor test benches. Precisely outfitted sensor and telemetry systems complement our customer applications.

Our customers from the fields of automotive engineering, mechanical engineering, railway, aerospace and energy use imc measurement devices, software solutions and test stands to validate prototypes, optimize products, monitor processes and gain insights from measurement data. As a solution

provider, imc offers their customers an attractive and comprehensive range of services. These include project consulting, contracted measurements, data evaluation, specialist deployment, customer-specific software development and system integration. imc consistently pursues its claim of providing services for “productive testing”.

If you would like to find out more specific information about imc products or services in your particular location, or if you are interested in becoming an imc distributor yourself, please go to our website where you will find both a world-wide distributor list and more details about becoming an imc distributor yourself:

<http://www.imc-tm.com/our-partners/>



Terms of use:

This document is copyrighted. All rights are reserved. Without permission, the document may not be edited, modified or altered in any way. Publishing and reproducing this document is expressly permitted. If published, we ask that the name of the company and a link to the homepage www.imc-tm.com are included. Despite careful preparation of the content, this document may contain errors. Should you notice any incorrect information, we kindly ask that you please inform us at marketing@imc-tm.de. Liability for the accuracy of the information is excluded.